



**MOTOROLA**

**MINITOR V<sup>TM</sup>**

6880309R95-O

**PAGER PROGRAMMING GUIDE**



# SOFTWARE LICENSE AGREEMENT

## 1. LICENSE GRANT

In connection with the transfer of possession of the software package provided with this Agreement, Motorola, (LICENSOR) hereby grants to possessor (LICENSEE) a non-exclusive license to use the software program(s) (SOFTWARE) and documentation (DOCUMENTATION) of said software package with a single-user computer system. LICENSEE may, upon requesting and receiving written permission of LICENSOR, transfer possession of the software package including SOFTWARE and DOCUMENTATION and transfer this license to another party if the other party agrees in writing to accept the terms and conditions of this agreement

## 2. OWNERSHIP

LICENSEE is given possession of a program module(s) with the software package in or on which Software is copied, but title to the SOFTWARE and DOCUMENTATION, all copies thereof and all rights therein, including all rights in the patents, copyrights, and trade secrets applicable thereto, shall remain vested in LICENSOR, regardless of the form or media in or on which the original and other copies of software and documentation may subsequently exist. Nothing contained herein shall be deemed to convey any title or ownership interest in the program module(s), SOFTWARE or DOCUMENTATION to LICENSEE.

LICENSEE agrees not to disclose, transfer, provide on any form, except as otherwise provided in this agreement, the software package or any portion thereof, to any person other than employees of LICENSEE without prior written consent of LICENSOR, and any such disclosure or transfer shall be consistent with the use in the single-user computer system.

LICENSEE agrees not to reverse compile or disassemble SOFTWARE.

LICENSEE agrees that it will not in any form, export, re-export, resell, ship, or divert or cause to be exported, re-exported, resold, shipped, or diverted, directly or indirectly, the SOFTWARE and DOCUMENTATION or a direct product thereof to any country for which the United States government or any agency thereof at the time of export or re-export requires an export license or other government approval without first obtaining such license or approval.

## 3. COPYING RIGHTS

LICENSEE may make copy(s) of SOFTWARE and DOCUMENTATION, required for backup or modification purposes in support of the use of the SOFTWARE with the single-user computer system, but LICENSEE must include existing copyright notices on any such copy, modifications, or portion of SOFTWARE merged into another program. Such notice(s) may appear in several forms, including machine-readable form, and LICENSEE agrees to reproduce such notice(s) in each form in which it appears, to the extent it is physically possible to do so.

## 4. TRANSFERABILITY

LICENSEE may not transfer SOFTWARE and DOCUMENTATION, or any copy(s) thereof, in whole or in part, except as expressly provided in this agreement. If Licensee transfers SOFTWARE and DOCUMENTATION to another party as expressly provided in this agreement, LICENSEE must at the same time either transfer all copies whether printed or machine-readable form to the same party or destroy any copies not transferred; this includes all modifications and portions of SOFTWARE contained or merged into another program.

If LICENSEE transfers SOFTWARE and/or DOCUMENTATION or any copy, modification, or merged portion of SOFTWARE to another party without written permission of LICENSOR, this license is automatically terminated.

## 5. TERM

The term of this license agreement is for as long as LICENSEE uses the SOFTWARE for its intended purpose. This agreement may be terminated by LICENSEE upon one month's prior written notice. LICENSOR may terminate this agreement if LICENSEE is in default of any of the terms and conditions of this agreement, and termination is effective if LICENSEE fails to correct such default within thirty (30) days after written notice thereof by LICENSOR.

Within one month after termination of this agreement, LICENSEE will certify to LICENSOR in writing that through its best efforts, and to the best of its knowledge, the original and all copies, in whole or in part, in any form, of the SOFTWARE and DOCUMENTATION have been destroyed or returned to LICENSOR.

## 6. ASSIGNMENT, SUBLICENSE, OR TRANSFER

LICENSEE shall not (by contract, operation of law, or otherwise) assign, sublicense under or transfer this agreement for any right of interest in this agreement, or delegate performance of any of its obligations under this agreement, without the prior written consent of the LICENSOR. Any such assignment, sublicense, transfer, or delegation without the LICENSOR's prior written consent shall be voidable at the LICENSOR's option.

## 7. WARRANTY AND MAINTENANCE

LICENSOR warrants that under normal use, SOFTWARE shall perform the functions specified in its DOCUMENTATION. If SOFTWARE does not conform to its DOCUMENTATION such that its functional performance is significantly affected and LICENSOR is notified promptly, in writing, within ninety (90) days from the date of shipment of the software package, LICENSOR will correct such nonconformance by repair, or at its option, make available a replacement program module(s) providing there is no misuse of the nonconforming program module(s).

If LICENSOR or its distributor is unable to deliver a replacement module(s) having SOFTWARE which conforms substantially to its

DOCUMENTATION, LICENSOR may terminate this license by providing a refund to LICENSEE upon LICENSEE's return of such program modules, except as provided in Section 3 above, any modification in SOFTWARE by LICENSEE or third parties shall void this warranty.

LICENSOR does not represent or warrant that the SOFTWARE or DOCUMENTATION furnished hereunder is free of infringement of any of the third parties, copyrights, trade secrets, or other intellectual property rights.

LICENSOR shall not be responsible for maintenance or field service of the program module(s) and SOFTWARE under this agreement.

THE FOREGOING WARRANTIES ARE EXCLUSIVE AND IN LIEU OF ALL OTHER WARRANTIES WHETHER STATUTORY, EXPRESS OR IMPLIED (INCLUDING ALL WARRANTIES OF MERCHANTABILITY AND FITNESS FOR A PARTICULAR PURPOSE AND ALL WARRANTIES ARISING FROM COURSE OR DEALING OR USAGE OF TRADE) WITH RESPECT TO THE PROGRAM MODULE(S), SOFTWARE, OR DOCUMENTATION FURNISHED BY LICENSOR UNDER THIS AGREEMENT OR ANY USE OF SUCH SOFTWARE OR DOCUMENTATION BY THE LICENSEE.

The remedies provided above are the LICENSEE's exclusive remedies for any failure of LICENSOR to meet its warranty obligations. Actions by LICENSEE in the manner provided above shall constitute complete fulfillment of all the warranty liabilities of LICENSOR whether the claims of the LICENSEE are based on contract, in tort (including negligence and strict liability), or otherwise with respect to or arising out of the program module(s), SOFTWARE or DOCUMENTATION furnished hereunder.

## 8. LIMITATION OF LIABILITY

LICENSOR, its subcontractors and suppliers of any tier, shall not be liable in contract, in tort (including negligence and strict liability), or otherwise for damages or loss of other property or equipment, loss of profits or revenue, loss of use of equipment or power system, cost of capital, cost of purchased or replacement power or temporary equipment (including additional expenses incurred in using existing facilities), claims of customers of the LICENSEE, or for any special, indirect incidental or consequential damages whatsoever. The remedies of the LICENSEE set forth herein are exclusive where so stated and the total cumulative liability of the LICENSOR with respect to this agreement, or anything done in connection therewith, whether in contract, in tort (including negligence and strict liability) or otherwise, shall not exceed the price of the product in which such liability is based.

## 9. NOTICE

All notices in connection with this agreement shall be in writing and shall be given by certified mail, return receipt requested, at the following address:

Motorola, Inc., 1313 E. Algonquin Rd., Schaumburg, IL 60196-1081,  
ATTENTION: Group Patent Counsel.

## 10. GOVERNING LAW

This agreement shall be governed and interpreted by the laws of the state of Illinois.

## 11. AGREEMENT

LICENSEE ACKNOWLEDGES THAT THIS AGREEMENT HAS BEEN READ AND UNDERSTOOD AND AGREES TO BE BOUND BY ITS TERMS AND CONDITIONS. LICENSEE FURTHER AGREES THAT THIS AGREEMENT CONSTITUTES THE ENTIRE UNDERSTANDING OF LICENSEE AND LICENSOR WITH RESPECT TO THE SUBJECT MATTER HEREOF AND COMPLETELY SUPERCEDES ANY PRIOR UNDERSTANDINGS, EITHER ORAL OR WRITTEN. ANY MODIFICATION OF THIS AGREEMENT SHALL BE MADE ONLY BY MUTUAL AGREEMENT AND EVIDENCED BY WRITTEN AMMENDMENT SIGNED BY BOTH LICENSOR AND LICENSEE.

## Computer Software Copyrights

The Motorola products described in this manual may include copyrighted Motorola computer programs stored in semiconductor memories or other media. Laws in the United States and other countries preserve for Motorola certain exclusive rights for copyrighted computer programs, including the exclusive right to copy or reproduce in any form the copyrighted computer program. Accordingly, any copyrighted Motorola computer programs contained in the Motorola products described in this manual may not be copied or reproduced in any manner to the extent allowed by law without the express written permission of Motorola. Furthermore, the purchase of Motorola products shall not be deemed to grant either directly or by implication, estoppels, or otherwise, any license under the copyrights, patents or patent applications of Motorola, except for the normal, non-exclusive, royalty-free license to use that arises by operation of law in the sale of a product.

## Registration

You can register with Motorola to receive software revision information by completing and returning the Software Registration Card enclosed with the software.

## Scope of This Manual

This manual contains information for equipment requirements, installation, setup and use of Minitor V Pager Programmer Software (PPS).

---

## Table of Contents

Getting Started .....	1
Equipment Required .....	1
Programming Interface .....	1
Installing the Programmer Software .....	2
Connecting Programmer to Minitor V .....	3
Initializing Minitor V for Programming .....	5
Launching the Application.....	7
Commands .....	8
System Setup.....	9
Programming User Data .....	10
General Information.....	11
Channel .....	13
Model Options .....	17
Function Switches.....	19
Troubleshooting Guide .....	21
Ordering and Parts Information .....	22

## Getting Started

The Minitor V Pager Programmer Software and interface package, combined with an IBM personal computer (or compatible), provides the flexibility to program Motorola Minitor V pagers to meet individual requirements. To obtain the best results from the product, please take a few minutes to read this instruction guide.

## Equipment Required

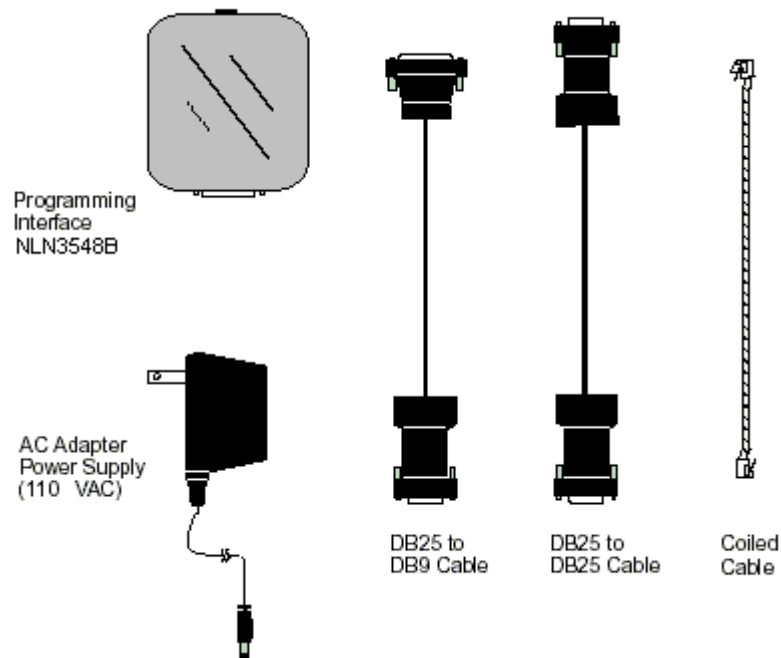
To install and operate the programmer, you need a system that meets the following minimum requirements:

- Pentium II-class PC (300 MHz or higher)
- Windows 98, Windows NT 4.0 with Service Pack 6 installed, Windows 2000 and Windows XP
- Administrative Privileges on the system
- Microsoft Internet Explorer 5.0 or higher
- 128 megabytes of RAM
- Disk Space - 500 MB
- Super VGA monitor (with the screen resolution set to at least 800 x 600, small fonts setting, and 256 colors or greater)
- A serial output port with DB9 or DB25 connector, or a USB port. Motorola does not offer a USB cable. Users can purchase one on the open market.

## Programming Interface

The programming interface kit, shown in Figure 1, supports Minitor V codeplug programming. Items included with the interface kit consist of the following:

- Programming interface
- AC/DC adapter/power supply
- DB25 to DB9 cable
- DB25 to DB25 cable
- Coiled cable



**Figure 1: Programming Interface Kit**

## Installing the Programmer Software

The pager programmer software can be installed from a Minitor V PPS installation CD. The installation CD has the auto run feature, which automatically starts the installation process. Please follow the procedure below to complete the installation.

1. Insert the Minitor V Pager Programming Software CD into your CD drive. The installation software should be launched automatically. **Note:** If it does not launch by itself, browse your CD drive using Windows Explorer, select the setup.exe at the root of your CD drive, and double click on it.
2. The Install Shield Wizard will guide you through the installation procedure.

**Note:** Only one configuration for the programming software is allowed. If you have an older version already installed on your computer, you have to remove it first. The software can be removed by selecting “Start → Programs → Minitor V PPS → Uninstall Minitor V PPS ” or following the procedure below:

1. Click on “Start → Settings → Control Panel → Add/Remove Programs”
2. Select “Minitor V PPS”.
3. Click on “Remove” button. The old version of Minitor V PPS will be removed successfully.

**The uninstall operation will retain all your previously archived codeplug files.**

## Connecting Programmer to Minitor V

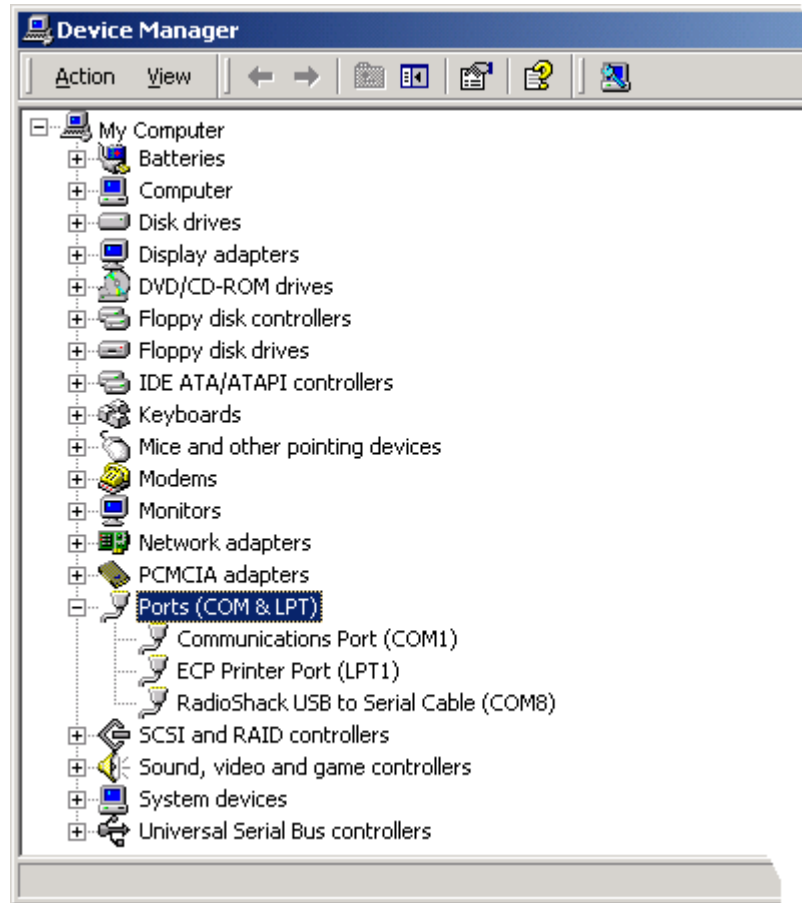
Connect the programmer and programming interface hardware as follows:

1. At the rear of your PC, connect either the DB25 to DB25 interface cable or the DB25 to DB9 interface cable to the RS232 serial port (COM1 ~ COM4). If you are using USB port, connect one end of the USB to Serial cable (**Note:** This cable is not included in the programming kit. You have to purchase it separately) to your PC's USB port and the other end to DB9 of the DB25 to DB9 cable. Your PC system can map the selected USB port to any free COM port up to COM8.

**Note:** How to check which COM port the USB port is mapped to

- From desktop, right click on **My Computer**
- Select **Properties**.
- Choose the **Hardware** tab
- Click on **Device Manager** button from the second group – Device Manager
- Expand the **Ports (COM & LPT)** item
- From there, you can see which COM port the USB port is mapped to

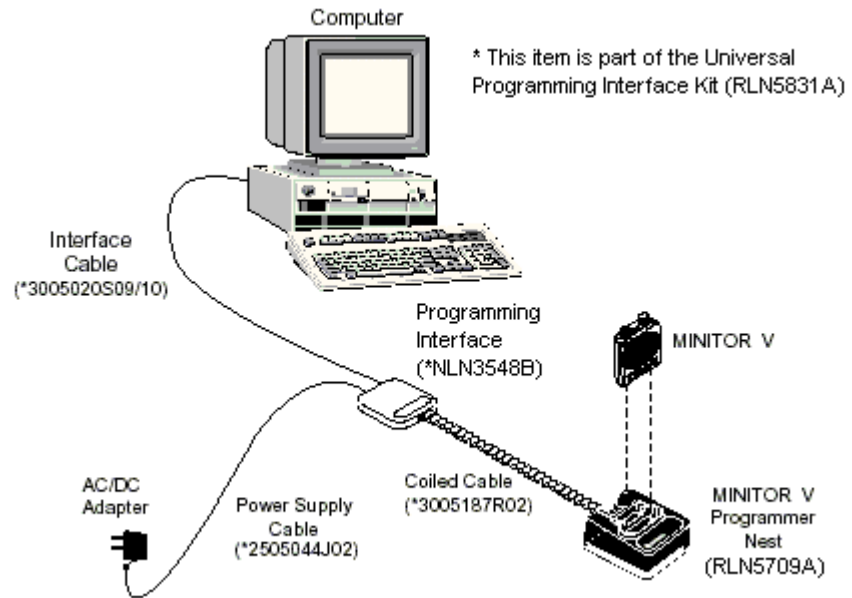
Here is an example of device manager window. In this case, the cable is RadioShack USB to Serial cable. It is mapped to COM8



**Figure 2: Device Managers**

2. Connect DB25 end of the selected cable to the DB25 connector of the programming interface.
3. Connect the programmer cable end with the phone jack to the programming interface.
4. Plug the coiled cable into the Minitor V programmer nest and programming interface.
5. Connect AC/DC adapter/power supply to programming interface.
6. Plug AC/DC adapter/power supply into wall outlet.
7. Hardware installation is complete.



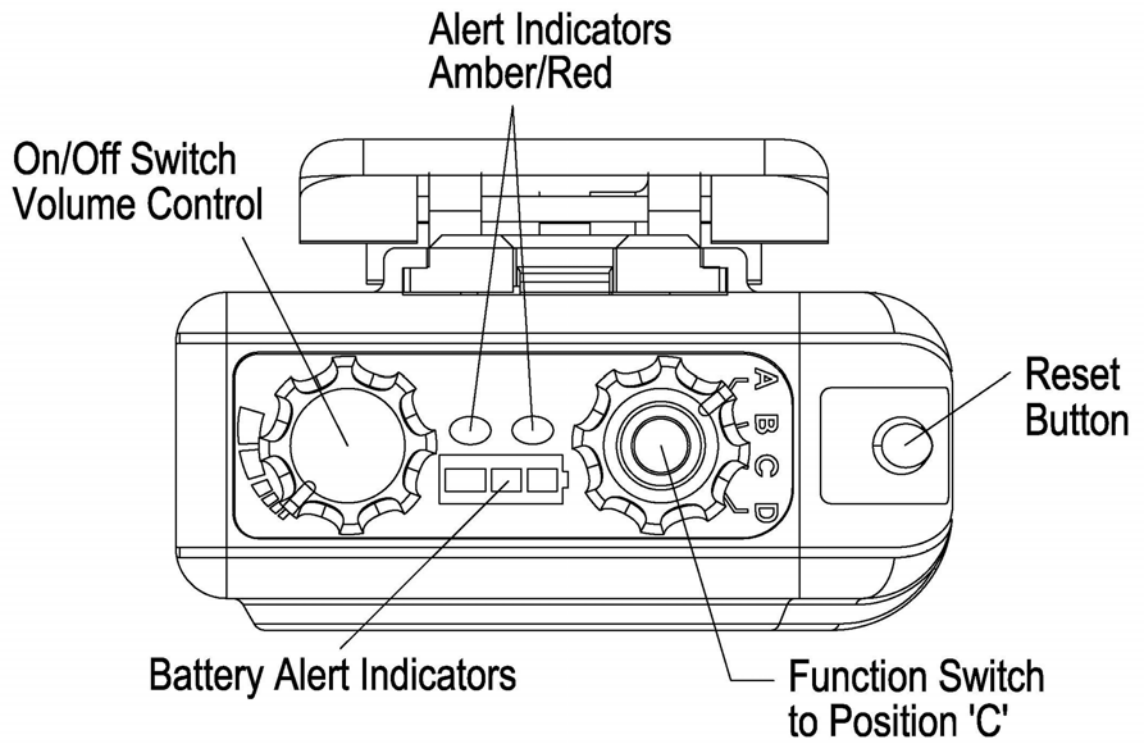


**Figure 3: Programmer Hardware Connections**

## Initializing Minitor V for Programming

The Minitor V must be initialized for programming prior to install into the programmer nest. Refer to Figure 4 and perform the following steps:

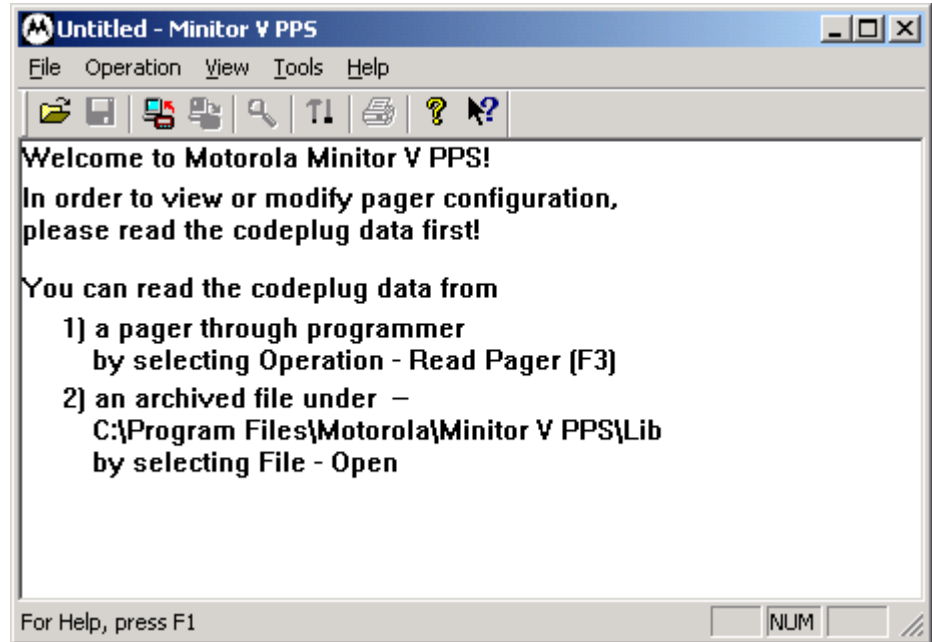
1. Turn the On/Off volume control to the OFF (counterclockwise) position.
2. Set the function switch to position 'C'.
3. With your right or left thumb, press down firmly and hold the reset button.
4. With your other hand, turn the volume control to ON (clockwise).
5. The amber and red indicators should both light and a constant loud tone should sound for three seconds.
6. Release the reset button as soon as the events in Step 5 occur.
7. Observe the position of the programming pins and insert the Minitor V into the programming nest. The red indicator on the programming interface should light.



**Figure 4: Controls and Indicator Location**

## Launching the Application









The application can be launched from *Start* → *Programs* → *Terrapin PPS* → *Terrapin PPS*. The following window appears,



**Figure 5: Minitor V PPS Interface**

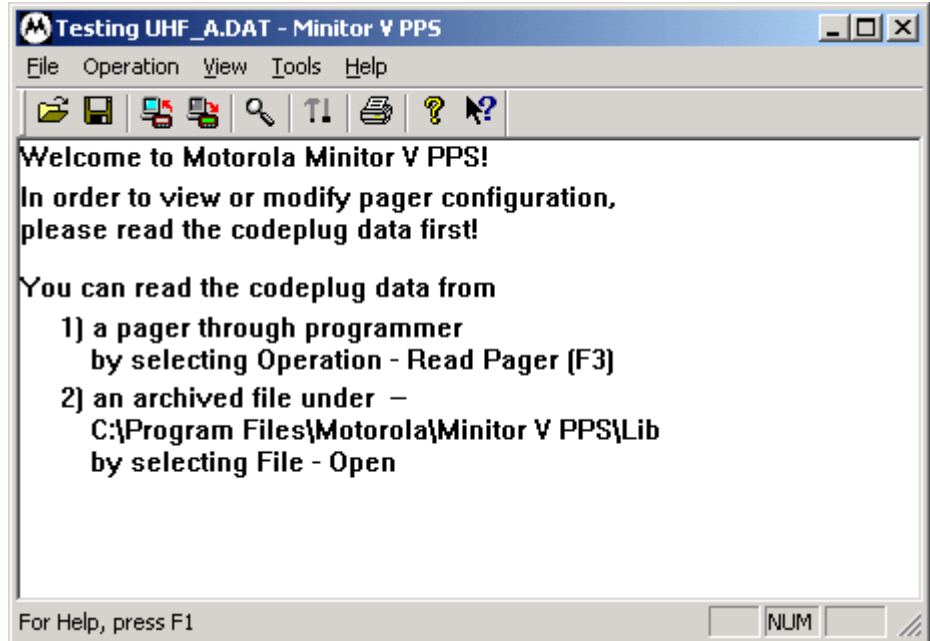
## Commands

The following table lists all Minitor V PPS commands.

Menu	Command	Icon	Description
File	Open		Open a Minitor V codeplug file. The file has the extension “.dat”.
	Save		Save the current codeplug data to a file.
	Save As		Save the current codeplug data to a file with different filename.
	Print Preview		Preview the codeplug data.
	Print		Print the codeplug data.
	Exit		Exit the application.
Operation	Read Pager		Read codeplug data from a pager.
	Write Pager		Write the current codeplug data to a pager.
View	User Data		View/Modify the User Data.
	Toolbar		Toggle the Toolbar.
	Status Bar		Toggle the Status Bar.
Tools	System Setup		Set the serial communication port.
Help	Help Topics		Launch the Help System starting with Help Contents.
	About Minitor V PPS		About Minitor V PPS information.

**Table 1: Minitor V PPS Commands**

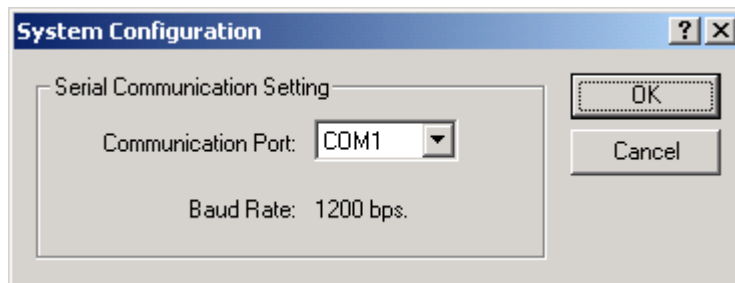
The first command required to program the pager is the “Read” command. The PPS can either read from a pager or an archived file. After the Read command, user can view/modify the codeplug data, save the codeplug data to a file, or write directly to a pager.



**Figure 6: Minitor V PPS available commands after “READ” operation**

## System Setup

If you encountered a problem reading codeplug directly from a pager, your serial communication port (RS-232) may not be set correctly. You need to execute the System Setup command to configure your system.



**Figure 7: System Configurations**

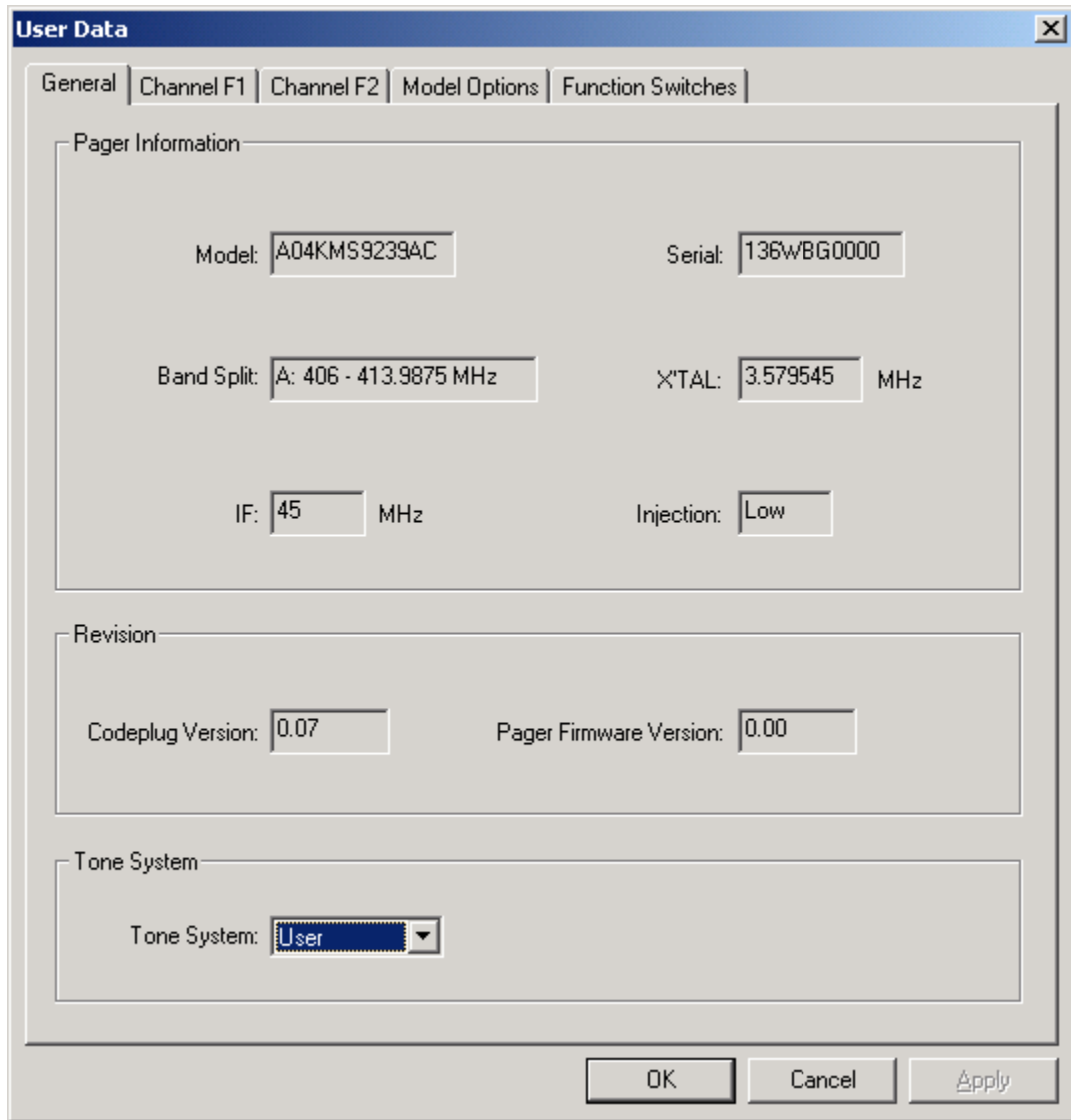
<b>Group</b>	<b>Field Name</b>	<b>Description</b>
Communication Setting	Communication Port (COM1, COM2, COM3, COM4, COM5, COM6, COM7 and COM8)	Select the communication port which is connected to your programmer kit
	Baud Rate	This is a non-editable field with fixed baud rate 1200 bps.

**Table 2: System Configurations**

### **Programming User Data**

User Data are organized into at least 4 pages in the User Data property sheet. They are General Information, Channel, Model Option and Function Switches.

**General Information**



**Figure 8: General Information Page**

<b>Group</b>	<b>Field Name</b>	<b>Description</b>
Pager Information	Model Number	This non-editable field displays the model number programmed into the pager at the factory and should match the model number on one of the labels attached to the pager.
	Serial Number	This non-editable field displays the serial number programmed into the pager at the factory and should match the serial number on one of the labels attached to the pager.
	Band Split	This non-editable field displays the band split programmed into the pager at the factory. The pager's working frequency has to be within this band split.
	X'Tal value	This non-editable field displays the CPU clock for tone decoder chip. This is a reference field for repairing.
	IF	This non-editable field displays the intermediate frequency.
	Injection	This non-editable field displays the injection direction.
Revision	Codeplug Version	This non-editable field displays the codeplug version.
	Pager Firmware Version	This non-editable field displays the pager firmware software version.
Tone System Information	System (Motorola, GE, Plectron, User, Fast Plectron)	Select the type of system that the address tones will be selected for. If a system other than USER is selected, then tones pertaining to the selected system are the only tones available for programming. If USER is selected, then any address tone frequency can be entered if proper tone spacing is maintained.

**Table 3: General Information Page**



## Channel

The model number determines how many channels a pager supports. If more than one channel is supported, more channel pages will be added to the User Data property sheet. Here is an example for channel 1.

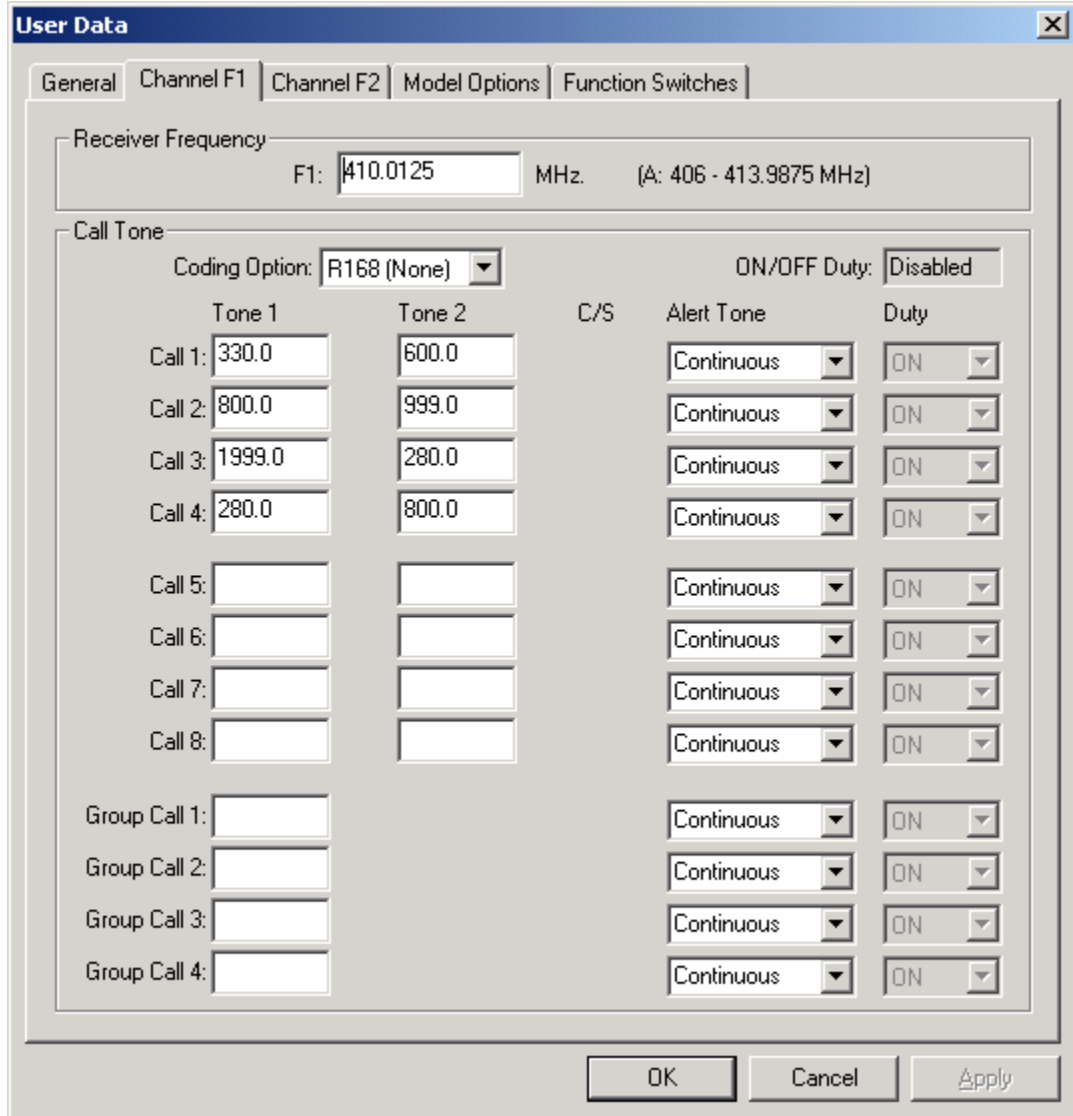


Figure 9: Channel Page

Group	Field Name	Description
Receiver Frequency	F1	Enter the frequency of operation for the channel. Channel frequency entry must be within the band split range.
Call Tone	Coding Option (R468, R130, R97, STD, R134, R138, R362, R177, R60, R621, R168 (None))	Select one of available configuration options. This field activates combinations of tone, call, and duty fields located directly below this field.
	ON/OFF Duty	This non-editable field enables or disables on/off duty functionality for this channel. This value is assigned in the Function Switches Page.
	Call/Tone (8 two-tone addresses and 4 group call addresses)	Make tone field entries. Entries into the tone fields are subject to previous selections of SYSTEM. If tone system selection is other than USER is selected then all entries must come from the selected system (Motorola, GE, Plectron, or FastPlect) and in the format selected (frequency or code).
	C/S	This non-editable field describes the relationship between call tones
	Alert Tone (Standard, Continuous, Music 1, Music 2, Music 3, Music 4, Music 5, Music 6, Music 7, Music 8)	Select one of the Alert Tone type
	Duty (ON/OFF)	If ON is selected, then the call address is always on. If OFF is selected, then the call address is normally ON unless the function switch is placed at the OFF DUTY position. In this function switch position, the call address is non functional.

**Table 4: Channel Page**

Here is an example of tone table for MOTOROLA tones. When Motorola is selected as System Tone, all call tones must match the tone listed in this table. If a tone frequency other than the tone

frequency listed in this table is entered in the call tone field, the PPS will round this frequency to the nearest frequency in the table.

Motorola Tone Table							
Group 1	Group 2	Group 3	Group 4	Group 5	Group 6	Group 10	Group 11
Freq (Code)	Freq (Code)	Freq (Code)	Freq (Code)	Freq (Code)	Freq (Code)	Freq (Code)	Freq (Code)
<input type="radio"/> 330.5 (110)	<input type="radio"/> 569.1 (120)	<input type="radio"/> 288.5 (138)	<input type="radio"/> 321.7 (140)	<input type="radio"/> 553.9 (150)	<input type="radio"/> 1122.5 (190)	<input type="radio"/> 1472.9 (170)	<input type="radio"/> 1930.2 (200)
<input type="radio"/> 349.0 (111)	<input type="radio"/> 600.9 (121)	<input type="radio"/> 296.5 (108)	<input type="radio"/> 339.6 (141)	<input type="radio"/> 584.8 (151)	<input type="radio"/> 1153.4 (191)	<input type="radio"/> 1513.5 (171)	<input type="radio"/> 1989.0 (201)
<input type="radio"/> 368.5 (112)	<input type="radio"/> 634.5 (122)	<input type="radio"/> 304.7 (139)	<input type="radio"/> 358.6 (142)	<input type="radio"/> 617.4 (152)	<input type="radio"/> 1185.2 (192)	<input type="radio"/> 1555.2 (172)	<input type="radio"/> 2043.8 (202)
<input type="radio"/> 389.0 (113)	<input type="radio"/> 669.9 (123)	<input type="radio"/> 313.0 (109)	<input type="radio"/> 378.6 (143)	<input type="radio"/> 651.9 (153)	<input type="radio"/> 1217.8 (193)	<input type="radio"/> 1598.0 (173)	<input type="radio"/> 2094.5 (203)
<input type="radio"/> 410.8 (114)	<input type="radio"/> 707.3 (124)	<input type="radio"/> 953.7 (160)	<input type="radio"/> 399.8 (144)	<input type="radio"/> 688.3 (154)		<input type="radio"/> 1642.0 (174)	<input type="radio"/> 2155.6 (204)
<input type="radio"/> 433.7 (115)	<input type="radio"/> 746.8 (125)	<input type="radio"/> 979.9 (130)	<input type="radio"/> 422.1 (145)	<input type="radio"/> 726.8 (155)	<input type="radio"/> 1285.8 (195)	<input type="radio"/> 1687.2 (175)	<input type="radio"/> 2212.2 (205)
<input type="radio"/> 457.9 (116)	<input type="radio"/> 788.5 (126)	<input type="radio"/> 1006.9 (161)	<input type="radio"/> 445.7 (146)	<input type="radio"/> 767.4 (156)	<input type="radio"/> 1321.2 (196)	<input type="radio"/> 1733.7 (176)	<input type="radio"/> 2271.7 (206)
<input type="radio"/> 483.5 (117)	<input type="radio"/> 832.5 (127)	<input type="radio"/> 1034.7 (131)	<input type="radio"/> 470.5 (147)	<input type="radio"/> 810.2 (157)	<input type="radio"/> 1357.6 (197)	<input type="radio"/> 1781.5 (177)	<input type="radio"/> 2334.6 (207)
<input type="radio"/> 510.5 (118)	<input type="radio"/> 879.0 (128)	<input type="radio"/> 1063.2 (162)	<input type="radio"/> 496.8 (148)	<input type="radio"/> 855.5 (158)	<input type="radio"/> 1395.0 (198)	<input type="radio"/> 1830.5 (178)	<input type="radio"/> 2401.0 (208)
<input type="radio"/> 539.0 (119)	<input type="radio"/> 928.1 (129)	<input type="radio"/> 1092.4 (189)	<input type="radio"/> 524.6 (149)	<input type="radio"/> 903.2 (159)	<input type="radio"/> 1433.4 (199)	<input type="radio"/> 1881.0 (179)	<input type="radio"/> 2468.2 (208)

**Figure 10: MOTOROLA Tone Table**

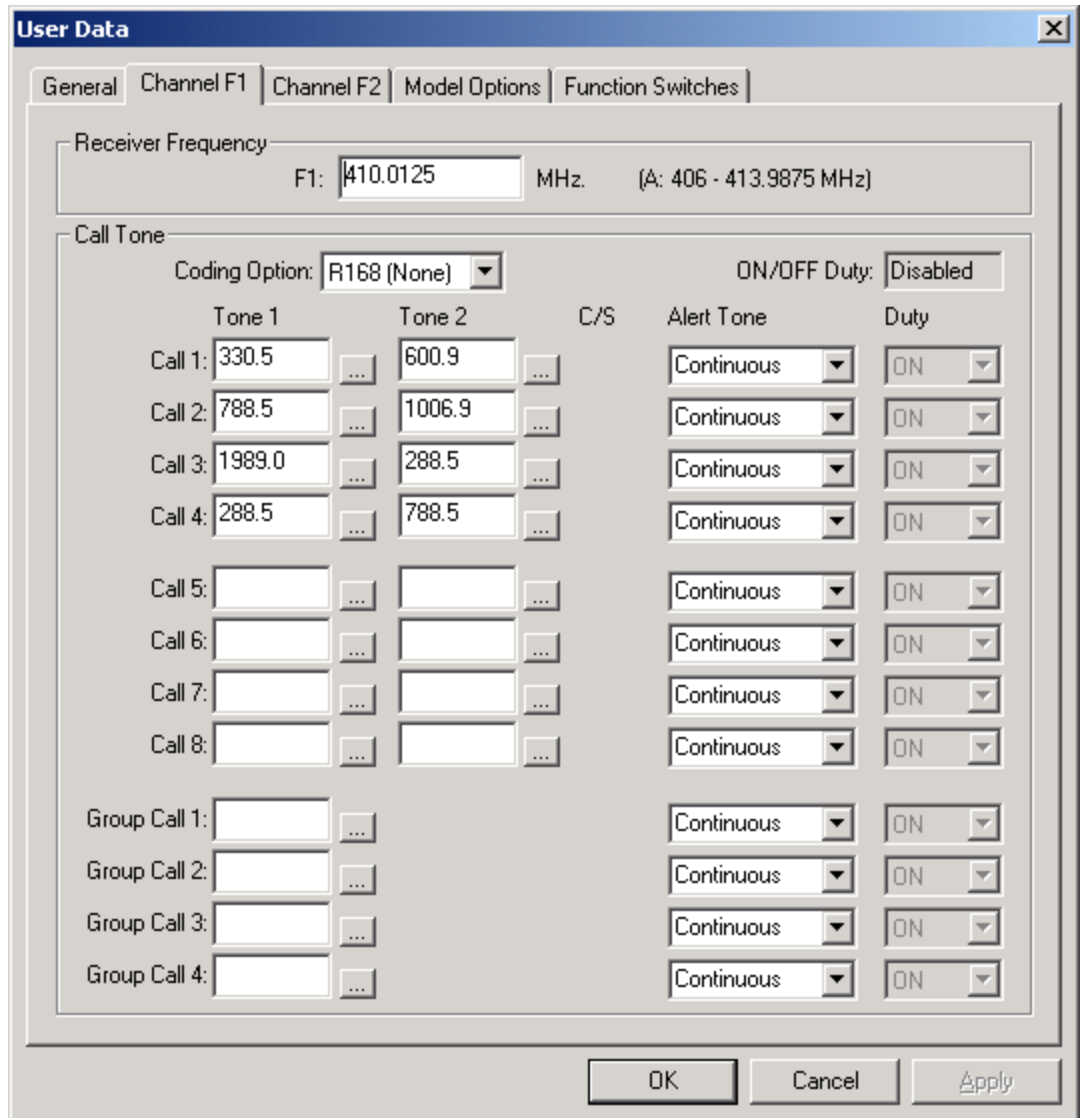


Figure 11: Channel Page with Tone System other than USER

## Model Options

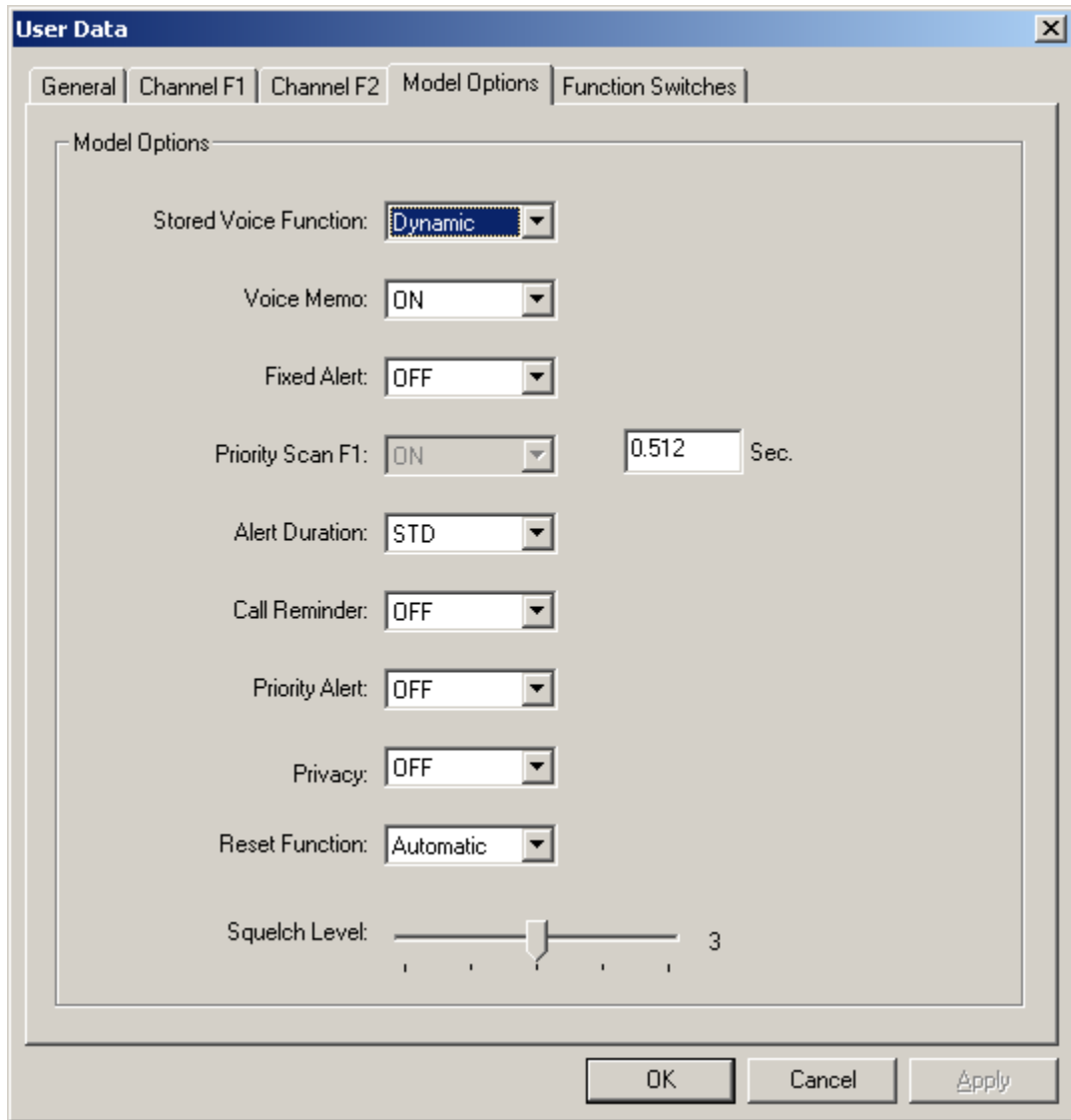


Figure 12: Model Option Page

Group	Field Name	Description
Model Option	Stored Voice Function (15s, 30s, 60s, 120s, Dynamic)	Select the maximum length (in seconds) of a message. This entry is available only on stored voice pagers
	Voice Memo (ON/OFF)	Enable or Disable the voice prompt when a pager is powered on or the function switch is turned.
	Fixed Alert (ON/OFF)	If ON is selected, the pager operates in the "fixed alert" mode. This means the tone alert is at maximum volume regardless of the position of the volume control. If OFF is selected, then the alert tone and voice audio level is adjustable using the volume control.
	Priority Scan F1 (ON/OFF)	This is a non-programmable field. The value is set in Function Switch page – Mode field.
	Alert Duration (Standard/Fixed)	Select either standard (STD) or alert cycle duration variable (FIXED) in seconds. STD = Alert cycle controlled by the transmitted tone duration. FIXED = a fixed time entered by the user. <b>Note:</b> A message may be missed if the alert duration is too long.
	Call Reminder (ON/OFF)	When stored voice is present, this enables the pager to beep periodically indicating an unread message.
	Priority Alert (ON/OFF)	When it is set to ON, vibrate page alerts are replaced by tone alert for call 1 only.
	Privacy (ON/OFF)	When it is set to ON, it can prevent the reset button from being used to monitor the channel.
	Reset Function (Automatic, Delayed N, Revert, Manual, Timeout, Revert N)	Determines how a select call pager squelches a message after receiving a page.
	Squelch level (1 ~ 5)	Squelch Level 1 is the tightest squelch setting.
<b>Note:</b> Not all features are available on all models		

**Table 5: Model Option Page**

### Function Switches

The screenshot shows the 'User Data' dialog box with the 'Function Switches' tab selected. The dialog contains four sections for configuring switches SW-A, SW-B, SW-C, and SW-D. Each section includes a 'Wide Band' checkbox, a 'Mode' dropdown menu, an 'Alert Type' dropdown menu, and two checkboxes: 'Enable ON/OFF Duty' and 'Push To Listen'.

Switch	Wide Band	Mode	Alert Type	Enable ON/OFF Duty	Push To Listen
SW-A	<input checked="" type="checkbox"/>	Monitor F1	Tone	<input type="checkbox"/>	<input type="checkbox"/>
SW-B	<input checked="" type="checkbox"/>	Monitor F2	Vibrate	<input type="checkbox"/>	<input type="checkbox"/>
SW-C	<input type="checkbox"/>	Priority Scan F1	Tone & Vibrate	<input type="checkbox"/>	<input type="checkbox"/>
SW-D	<input type="checkbox"/>	Selective Call F1	Vibrator	<input type="checkbox"/>	<input checked="" type="checkbox"/>

At the bottom of the dialog are three buttons: 'OK', 'Cancel', and 'Apply'.

Figure 13: Function Switches Page

<b>Group</b>	<b>Field Name</b>	<b>Description</b>
SW-A / SW-B / SW-C / SW-D	Wide Band	Select this check box when a pager is working under wide band.
	Mode (Monitor F1, Monitor F2, SelCall F1, SelCall F2, Probability Scan, Priority Scan F1, Silent Scan)	Select one of the pager operation modes. If a pager is set to a single channel pager, only modes regarding F1 are available.
	Alert Type (Tone, Vibrate, Tone & Vibrate)	A pager can alert at three different ways.
	Enable ON/OFF Duty	Select this check box to enable the ON/OFF duty selection for each call address in Channel Page.
	Push to Listen	Enable the PTL option. At this time, the Alert Type is changed to Vibrate automatically and disabled the user selection for Alert Type. This option is only available in selective call and silent scan modes.

**Table 6: Function Switches Page**



## Troubleshooting Guide

If ...	Then probable cause is ...	To correct the problem ...
Programming interface red LED fails to light after Minitor is inserted into programmer nest	1. Cable connections	Reseat all cable connections between the programming nest, programming interface, and computer
	2. Minitor is not inserted into programmer nest correctly for programming	Line up pins between Minitor and programmer nest then reinsert
Computer software can not read Minitor V codeplug	1. Minitor is not setup correctly for programming	Refer to installation and Setup and perform initialization procedure
	2. Com port selection	Check the COM port connection and set the COM port accordingly

**Table 7: Troubleshooting Guide**


## Ordering and Parts Information

Available programmer parts are listed in Table 8

<b>Description</b>	<b>Part Number</b>
Programmer nest, software, and manual	RLN5831A
Programmer nest only	RLN5709A
Software CD w/ Programming Manual	RVN4240A
Programming Interface (110V)	NLN3548B

**Table 8: Ordering and Parts Information**



Motorola and the  **MOTOROLA** logo are registered in the US Patent & Trademark office. All other product or service names are the property of their respective owners.

© Motorola, Inc. 2005

Customer Care Services  
1307 E. Algonquin Road -1<sup>st</sup> floor  
Schaumburg, IL 60196 USA

Product Services Technical Support  
1-800-909-5153

Printed in U.S.A. 03/05



6880309R95-O